

better

SEPTEMBER 2016 124-page issue

₹ 125

# interiors

IDEAS AND DESIGN FOR BETTER LIVING

## JUDICIOUS DESIGN

Rubel Dhuna Architects use deft design solutions to turn a compact South Mumbai office into a multifaceted space for a law firm, which can adapt to both work and recreation

### + BEST BUYS

30+ smart designer surfaces to add functional style to any space

### IN FOCUS

Industry experts offer insight into the freshest offerings and trends in the flooring segment



www.betterinteriors.in

{CentreStage}

# Trail Blazers

Two cool new-age restaurants; a swanky and open duplex remodel; a simple, earthy yet unique home that doubles up as an office; and a workspace that doesn't look like one... each of these projects are here to make their mark in the world of design.

- Architects Divya Ethirajan and Pramod Jaiswal of Bangalore-based Between Spaces not only design a home for Divya that has an earthy, restrained charm but also make space for the firm's office in an unobtrusive manner.
- Contemporary, spacious and clutter-free... New-Delhi's An-V-Thot Architects give an ageing duplex a much needed makeover.
- The atypical interiors of this office space at Fort, Mumbai designed by architect Rubel Dhuna will surely surprise, delight and mesmerize anyone who lays eyes on it.
- The interiors of Fat Kid Deli in Navi Mumbai by the aspiring firm Studio Node is an unpretentious, vibrant and chilled-out food joint — just like the client ordered.
- The look of Instapizza outlet in Gurgaon created by Renesa Architects like its name and the food it serves is casual, easy-going, industrial and a perfect spot for the youth to hang out in.

# Begin Again

Addressing the need of a growing family An-V-Thot Architects transformed an ageing duplex in New Delhi into a modern, elegant and spatially-sound home that reconciles its design ethos with changing times.

TEXT: ALIFIYA MEHAMDABADWALA; PHOTOGRAPHS: AVNEESH KUMAR, COURTESY AN-V-THOT ARCHITECTS

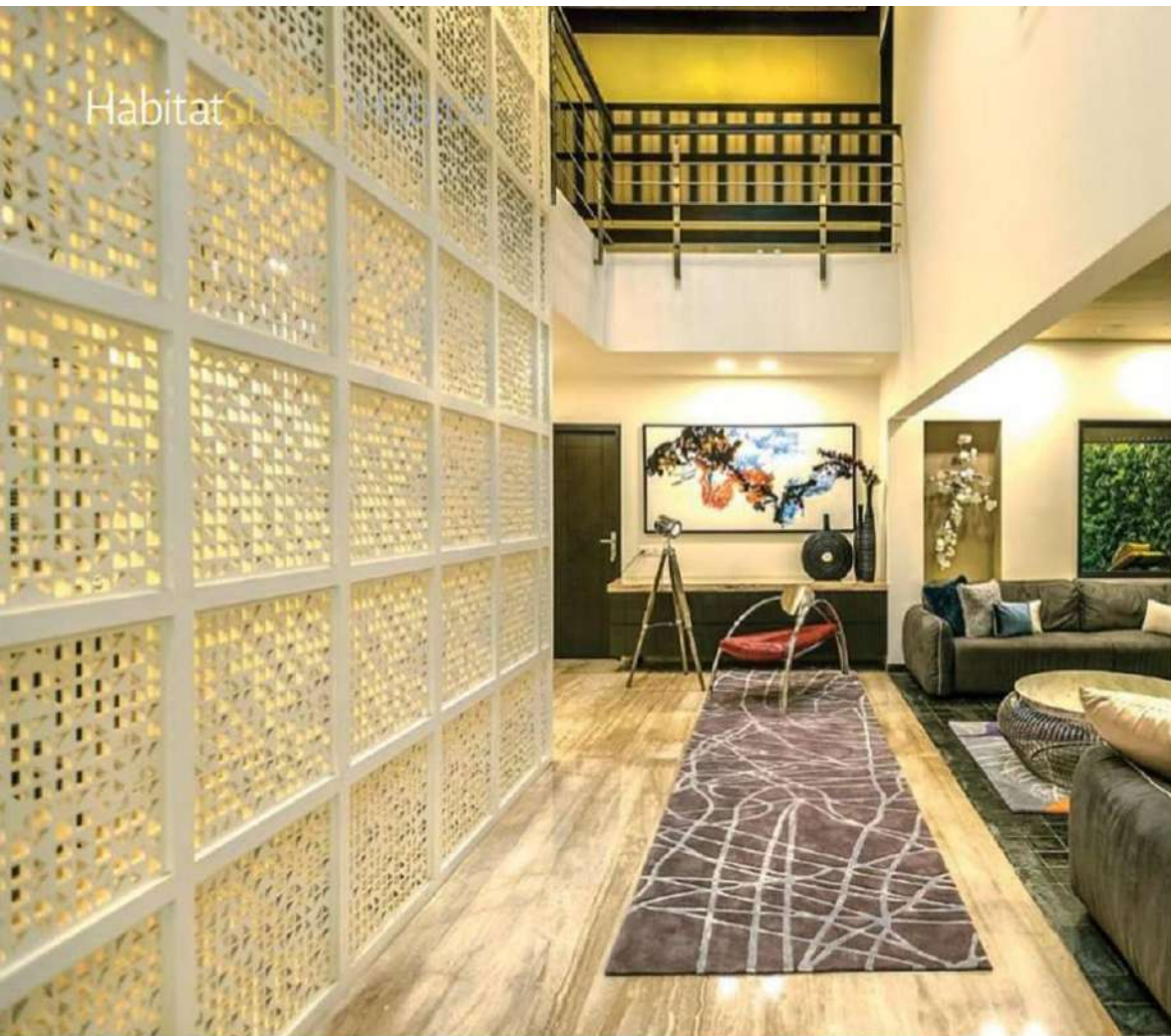


**ARCHITECTS**

Ankita Sweety and Pratyosh Chandan



An informal lounge has been created at the entrance of the home, replete with snug grey sofas, stainless steel centre tables and rough Cudappah stone flooring. Through the small window behind the sofa, one gets a glimpse of the vertical garden in the courtyard.



**W**hether it's rapid urbanization, family expansion, or a need for renewed vitality — the revamp of a home is imperative, and the reasons are varied. Change came knocking at the doors of the Pores 34 residence inhabited by the CM Jain and his family too. Bought in 1980, Pores 34 was a newly constructed home in a quaint and peaceful neighbourhood in western Delhi. Over the years, the locality turned into a chaotic, busy one while the grandiose duplex found itself in desperate need of a remodel. In order to keep up with the demands of the present, partners Ankita Sweety and Pratyoosh Chandan of An-V-Thot Architects were commissioned to give the space a complete design overhaul and expand it to accommodate the client's soon-to-be-wedded son and daughter-in-law.

The home was to be warm and inviting, yet have a distinct character. The client's son Pulkit expressed the need for a space that was tranquil and yet fitted in with its stimulating environs. With this brief in mind, Ankita and Pratyoosh set about conceptualizing a space that was free of spatial clutter and confusing circulation and which reverberated with a contemporary design. Though the age of the

**ABOVE** The central lobby makes an instant impression with carefully chosen accent pieces such as a designer curvilinear chair made of red leather and stainless steel and an antique studio light post.

**RIGHT** This vertical *jaali* not only divides the dining area and lobby but also acts as a railing on the floor above. It has been made using wooden frames that hold square laser-cut MDF boards painted in white Duco.





construction and the thick overbearing walls posed a challenge to the architects, the plan was to incorporate an open plate structure which would let the house breathe.

After careful study of the existing structure, the walls were painstakingly dismantled and negative spaces were put to use. The lower floor was divided into a living room, lounge, kitchen and dining area, powder room, and a master bedroom with a walk-in wardrobe and master bath.

As one enters the house, a large white *jaali* commands attention and simultaneously connects the first and second floors visually. It acts as a partition between the dining area and the lobby, after which it travels vertically to transform into the railing on the first floor. The informal lounge area has a relaxed, spacious feel to it, with plush deep grey sofas adding a sense of cosiness. The entire floor and front wall is layered with rough Cuddapah stone in its natural form, complemented by linear bands of wallpaper at the ceiling level. Colourful artefacts dispense vibrancy around. In contrast, the living room exhibits a formal outlook through the use of dark wood and dark brown leather sofas. Two centre tables, a few tall artefacts and some green planters help decorate this space. The false ceiling has been kept subtle with the use of a wallpaper-

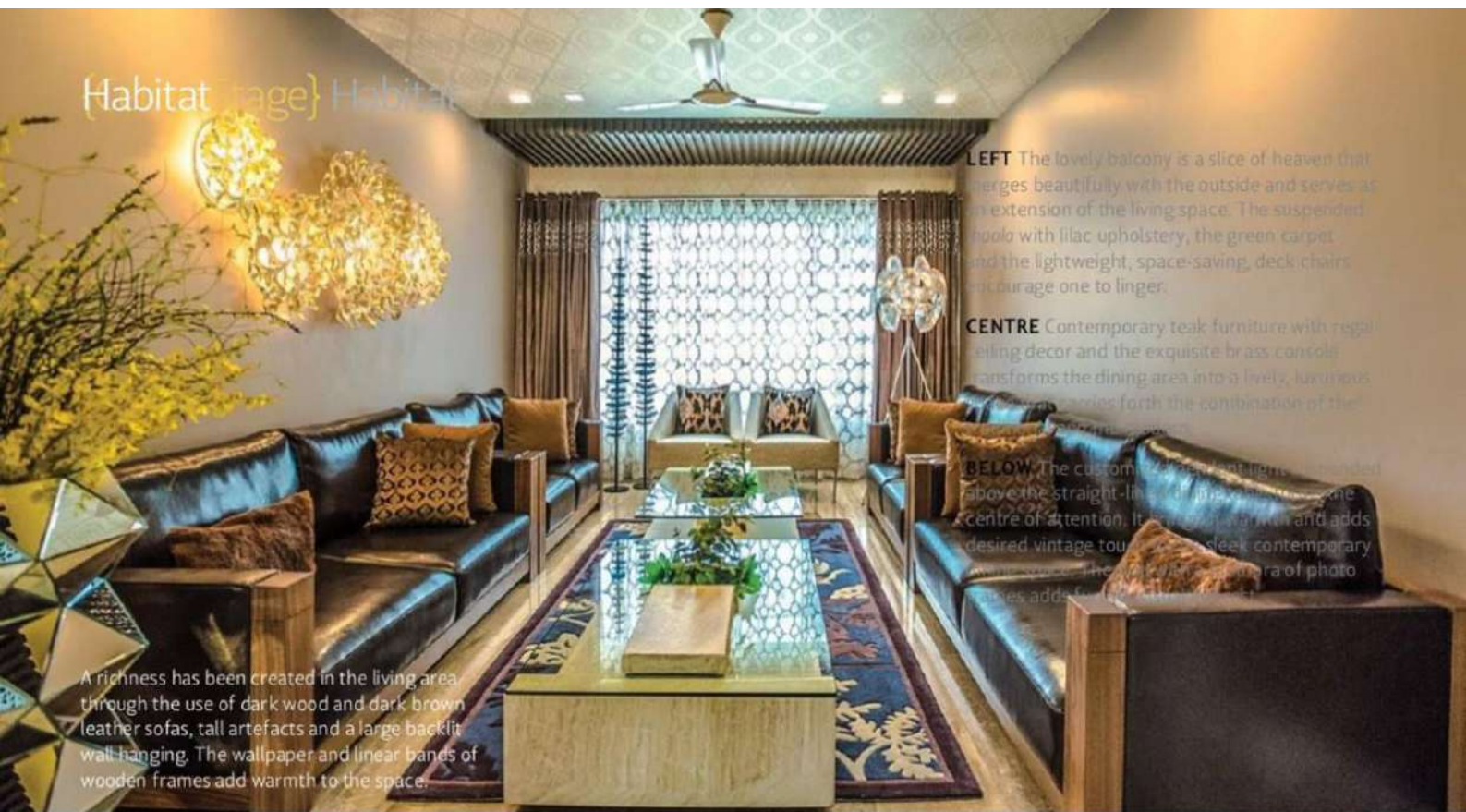


wrapped floating roof combined with linear bands of wooden frames that add warmth.

Right behind the *jaali* screen is a 10-seater dining table with back-lit, laser-cut Corian topped with glass. The same design finds reflections in the ceiling, creating a visual connect. The dining area overlooks the

**TOP** The colourful rug, accessories and paintings in the lounge create a wonderful contrast to the grey sofas and neutral flooring.

**ABOVE** A vivacious yellow recliner complements the green of the vertical garden on the terrace while a magnificent back-lit artefact sits proudly in a bed of pebbles at the deep end.



A richness has been created in the living area through the use of dark wood and dark brown leather sofas, tall artefacts and a large backlit wall hanging. The wallpaper and linear bands of wooden frames add warmth to the space.

**LEFT** The lovely balcony is a slice of heaven that merges beautifully with the outside and serves as an extension of the living space. The suspended pool with lilac upholstery, the green carpet and the lightweight, space-saving, deck chairs encourage one to linger.

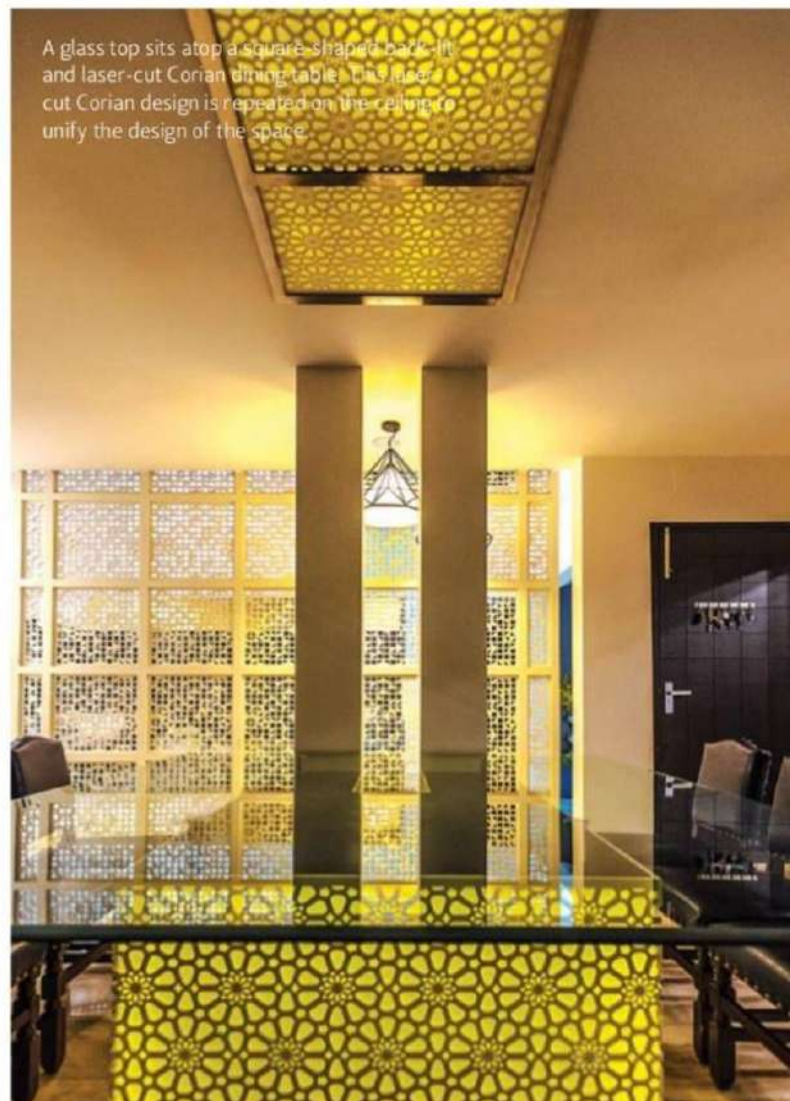
**CENTRE** Contemporary teak furniture with regal dining decor and the exquisite brass console transforms the dining area into a lively, luxurious space. The brass console carries forth the combination of the

**BELOW** The customised pendant light is centred above the straight-lined dining table. The centre of attention, it is a blend of modern and desired vintage touch. The sleek, contemporary chairs add to the overall aesthetic. The area of photo

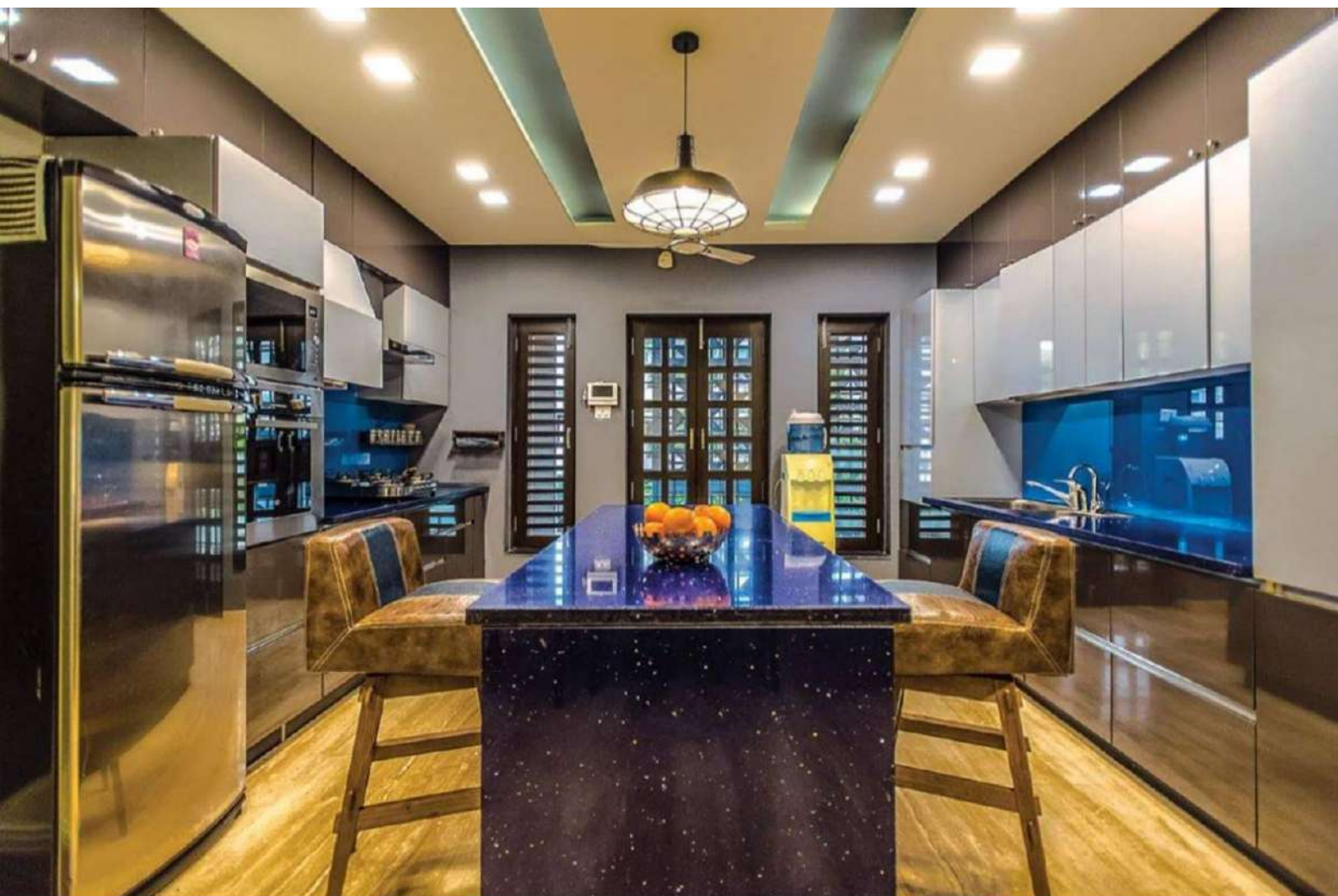
**CONCEPT:** To redesign a duplex in New Delhi, that has a warm and classy ambience as well as caters to the needs of the extended family.



The dining table seats 10 diners and comprises six formal chairs upholstered in deep blue leather and a sleek bench with stainless steel legs.



A glass top sits atop a square-shaped back-lit and laser-cut Corian dining table. This laser-cut Corian design is repeated on the ceiling to unify the design of the space.

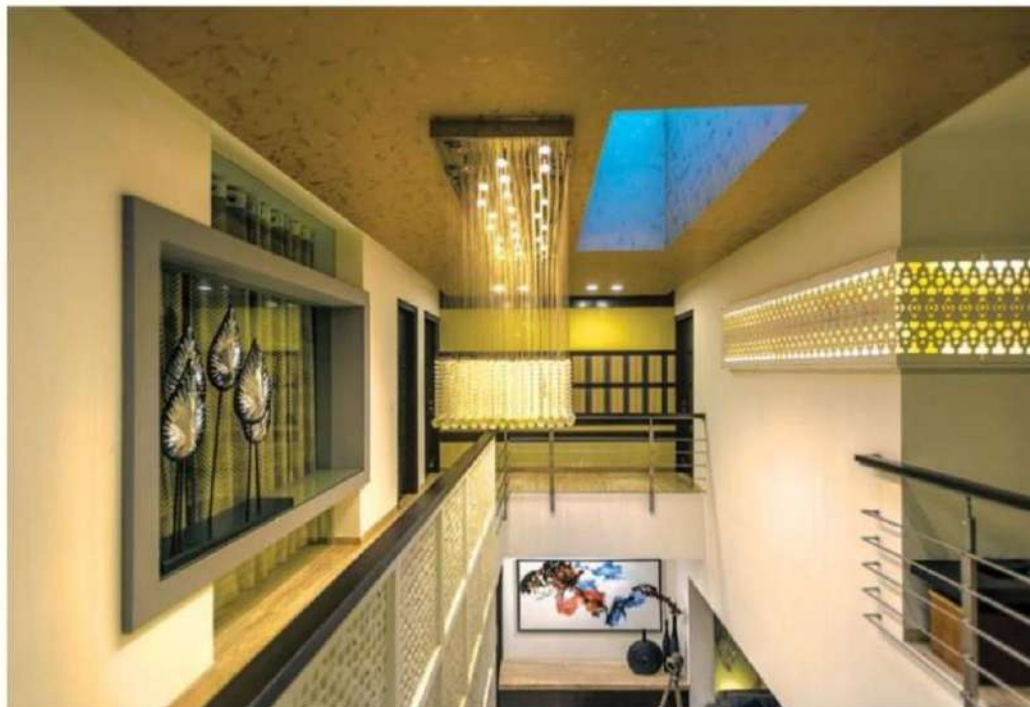


kitchen, which hosts a wide island counter — finished using blue composite — and two high-rise chairs. Shades of grey have been used in the form of overhead and under-counter storage, while the back splash made from toughened blue lacquered glass adds vibrant relief to the neutral palette. Carefully placed accessories form focal points throughout the house, giving each space a unique personality. The central lobby, for example, has been accentuated with a linear rug, a designer curvilinear chair made of SS and scarlet leather and an antique studio light post. Suspended storage with a wooden finish and a six-foot-wide painting with splashes of colours form additional visual interest.

The two original bedrooms at the rear of the house on the first floor were combined into a single master bedroom. A terrace-cum-courtyard with a vertical garden has been

## MATERIALS

**Flooring** Wood, rough Cudappah, Italian Diana, Dark Emperador Italian stone  
**Walls** Rough Cuddapah, wallpaper, toughened lacquered glass, black tiles, veneer, MDF panels  
**Ceiling** Gypsum false ceiling, wallpaper, wood, Corian panels



**TOP** A wide island counter finished in a dark blue composite stands in the centre of the kitchen. A bright blue toughened lacquered glass back splash breaks the monotony of the dark and light grey cabinets on either side.

**ABOVE** To decrease the distance between the two floors, the architects lowered the ceiling and created an opening for natural light to seep in. A chandelier, laser-cut back lit linear panel on the right-hand-side wall and the wallpaper on the ceiling are some other eye-catching elements here.

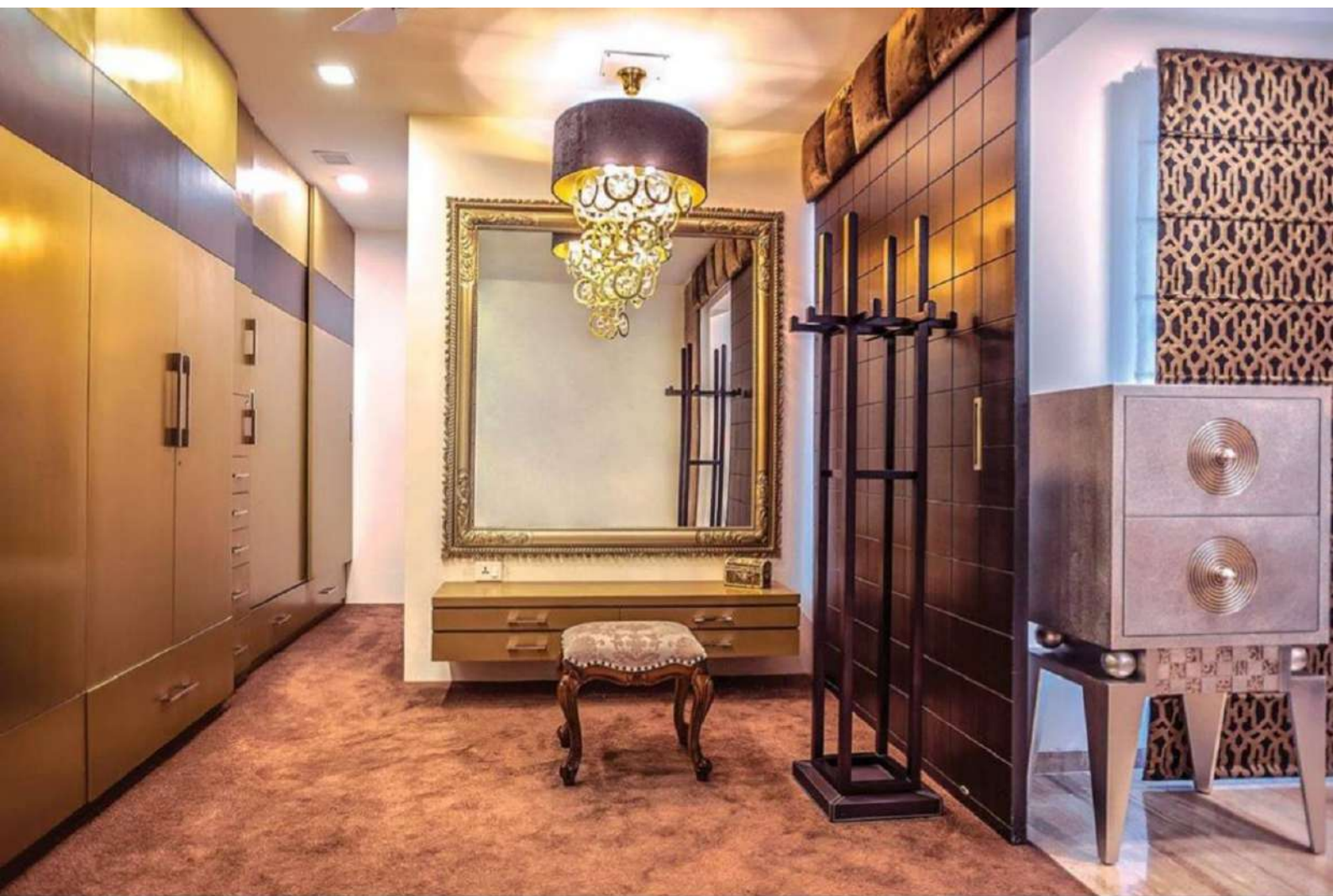




The courtyard can be used as a separate outdoor terrace or serve as an extension of the master bedroom with the help of three panelled UPVC sliding doors. A comfy bed, a relaxed sit-out area and a small study are the main elements of this space.



The outdoor terrace features a vertical garden along with a recliner and a fixed bench with multiple foot massagers, making it an ideal spot to relax and unwind.



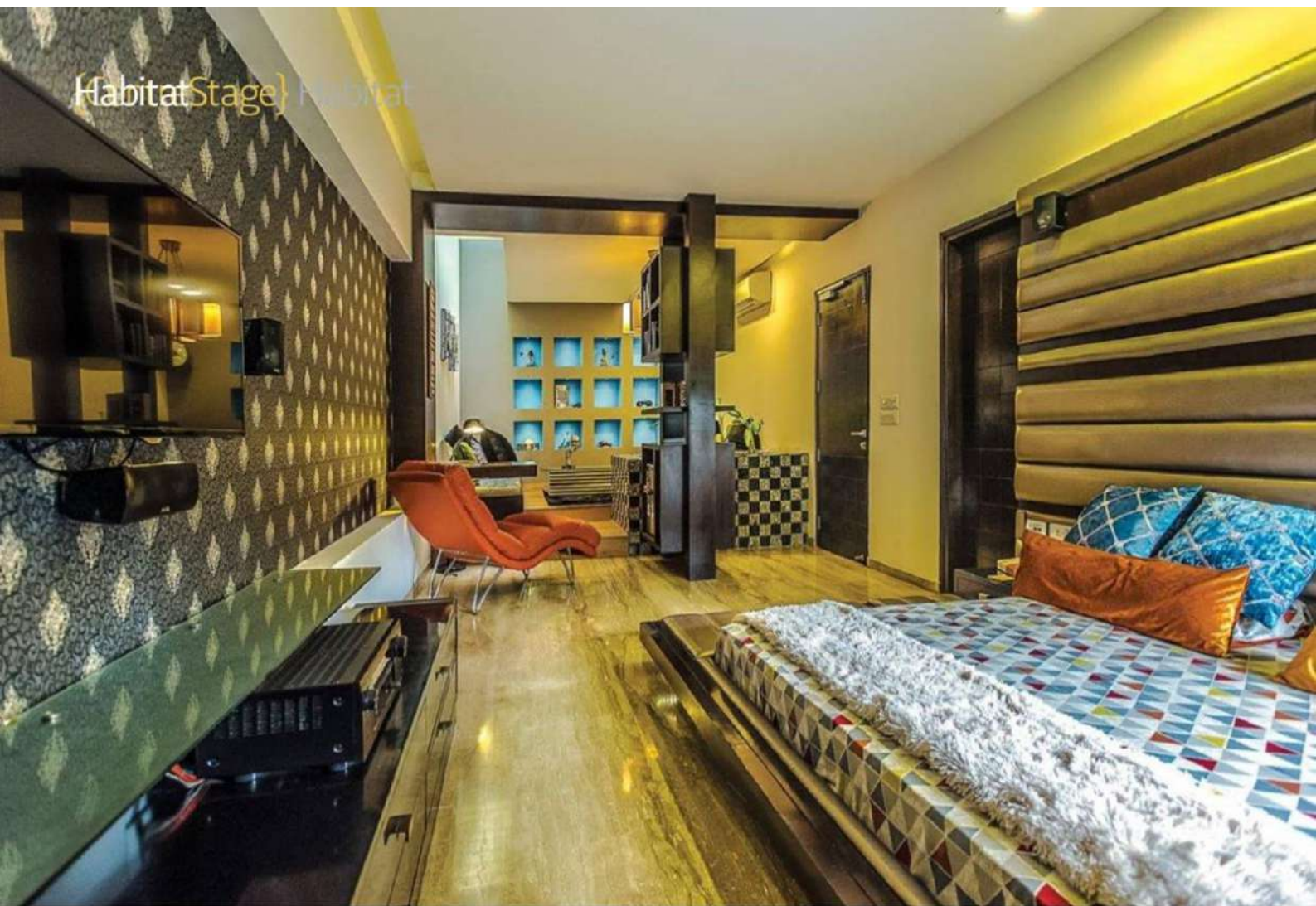
**TOP** The walk-in wardrobe in the master bedroom has been beautifully decorated with opulent splashes of gold incorporated in the form of the wall-to-wall velvet carpeting, the huge intricate mirror and the glimmering chandelier.

**ABOVE** Dark Emperador Italian stone has been used on the walls and floor of the master bath which comes equipped with a jacuzzi, steam and two cubicles for the WC and shower.

pulled inside and helps bring indirect sunlight into the south-west-facing space. The bedroom also houses a private sit-out, a study, and a walk-in wardrobe — replete with a warm carpeted floor and hanging lights — which leads to the private washroom. This comes equipped with a jacuzzi, WC and shower area while the flooring and walls are covered in dark Emperador Italian marble.

On the upper floor, the spatial configuration comprises a foyer with a waiting area, guest room with an attached walk-in-wardrobe and washroom, family lounge, meditation room, multi-purpose room, a powder room and the newlywed's bedroom cum lounge. To accommodate the needs of the client's son and his new bride, the bedroom was extended in a linear fashion to include a living area with a lounge and study within the room's periphery. Here the study-cum-wall extends to the ceiling and finally drops at the floor, becoming a library with show compartments. It divides the space into two parts — a sleeping area with the bed and a lounge with fixed seating on a raised platform. A courtyard placed in the centre of the room is complemented by the skylight positioned within the lounge area.

Since the central area of the house is double-heighted, the architects endeavoured to enhance the visual aura of this space. A



**ABOVE** The design of the newlyweds' bedroom is a culmination of several minute details. A study-cum-library divides the room into two parts: the bed area and lounge area. A niche in the ceiling lets light fall on the lounge seating while little alcoves in the wall serve as a showcase. The headboard of the low-height bed has been fashioned from horizontal bands of leather while dark wallpaper has been used behind the media unit.

**LEFT** This recliner can have multiple uses: one could sit on it and work at the study, read a book from the library or simply enjoy a cup of coffee at the sun-lit lounge.

dropped-down ceiling visibly decreased the distance between the floors, so the hanging ceiling was punctured to bring in natural light from above, while all the faces were covered with wallpaper to add drama. A custom-made rectangular chandelier which appears to be suspended in mid-air further accentuates this vibe.

Through an approach that sought to de-clutter and create volume through intelligent spatial organization, An-V-Thot Architects gave an ageing duplex a much needed facelift, bringing it visually on a par with its newer neighbours while accommodating the family's changing needs. The house then is a true reflection of the power of architecture to create spaces that transcend trivialities to elevate and celebrate the sense of being. **BI**

**FACT FILE:** Project Pores 34 residence Location New Delhi Client CM Jain Built-up area 5,000 sq ft Principal architects Ankita Sweety, Pratyosh Chandan Design team Riddhima Sharma, Shanmukh Sai, Sujata Phezong